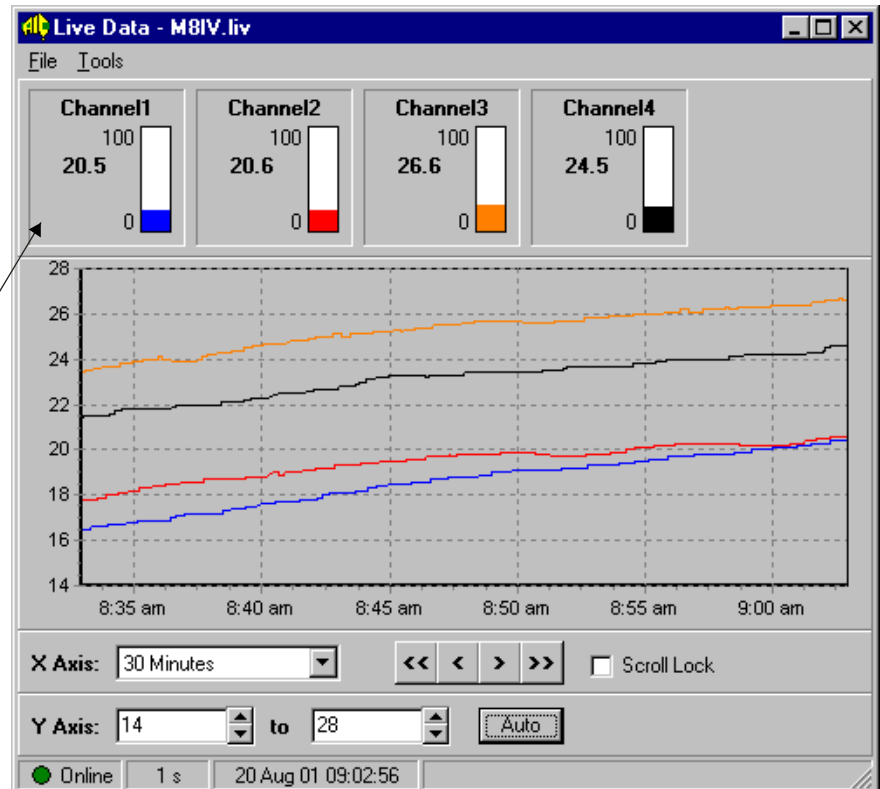


Windows™ Compatible Logging & Live Reading Software

Typical live data display.

The user can choose automatic allocation of colours for graphs etc. or can manually select graph, chart & background colours, limits and names.

e.g. the bar graph named "Channel 1" could be renamed "Silo Weight" the bargraph ranged 0 to 35 tonnes and graph colours changed as illustrated below.



Description

The download software is designed for use with PCs running Windows operating systems (not Vista). The software allows downloading onto PC of data from any Amalgamated Instrument Co (AIC) instrument fitted with serial communications (optional on most instruments) or Ethernet (available on some models).

The software allows viewing of live data and data logging directly to a file using the computer's hard disk. The software also allows downloading and viewing of data from an internal data logger which is optionally available on some AIC instruments.

The data downloaded from internal data loggers can be displayed in table or graph form. If required data can be exported for use in a word processor, spreadsheet or database. The software is supplied as standard with inbuilt data logger instruments.

When RS485 communications or Ethernet is used, multiple instruments can be connected and viewed on the same display or setup for viewing on separate displays.

The versatile setup procedure allows custom setup of instruments/channels displayed, graph colours, background colours etc. The software is supplied via download and installation is guided via an "Install Wizard" program for ease of installation.

Features

- Single instrument, multi channel instrument or multiple instrument (up to 32) connection.
- Live data display in chart and/or line graph form.
- Data logging directly to a file on disk or downloading from optional internal data logger .
- The program can run "in the background" allowing work on other programs whilst still running.
- Choice of vertical bar, horizontal bar, needle or max/min live reading displays.
- Software supplied as standard with inbuilt data logger instruments.
- Live data updated in selectable time blocks or a "fast as possible" mode allows update as fast as the system allows, for a single instrument with high sample rates this can be up to 9 samples/second approximately.
- Software setup accomplished through Windows displays.
- Auto setup and instrument recognition available for some instruments (single connection only).
- Easily installed and configured.
- Connection to computer/laptop (RS232 or RS485 or Ethernet available on some models).
- Data available in a format readily acceptable to major spreadsheet/database packages.
- Supplied on CD-ROM.

DLOAD-1.5-0

AMALGAMATED INSTRUMENT CO

ABN 80 619 963 692

Unit 5/28 Leighton Place Telephone: (02) 9476 2244 www.aicpl.com.au
Hornsby NSW 2077 Australia Facsimile: (02) 9476 2902 E-mail: sales@aicpl.com.au

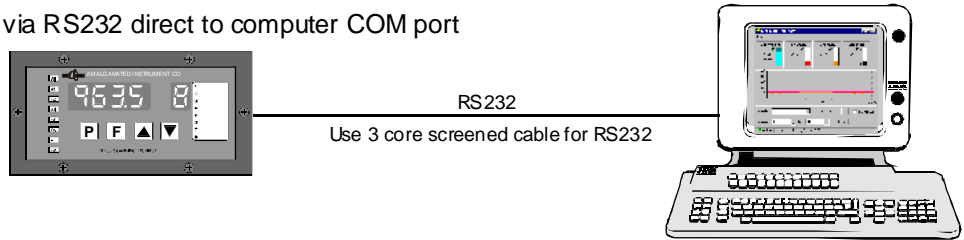
Manufactured by a

Quality
Endorsed
Company

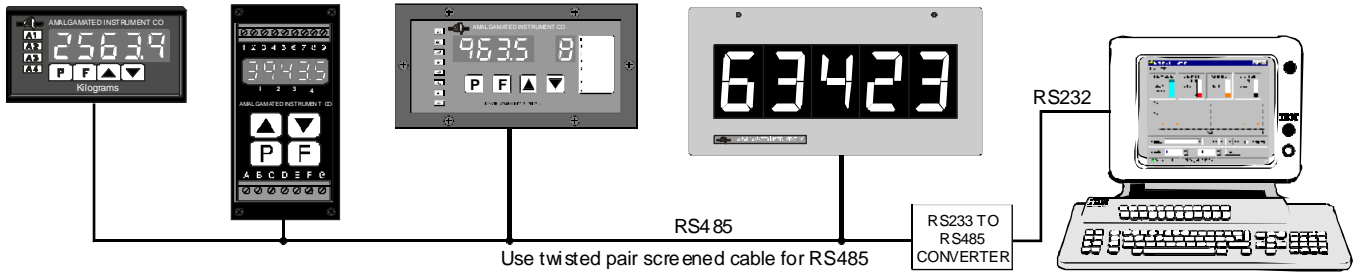


AS/NZS ISO 9001
Lic.No. QEC 6187
Standards Australia

Single instrument connection via RS232 direct to computer COM port



Multiple instrument connection (up to 32 instruments) via RS232 to RS485 converter to computer COM port. Instrument types can be mixed but must be manufactured by AIC.

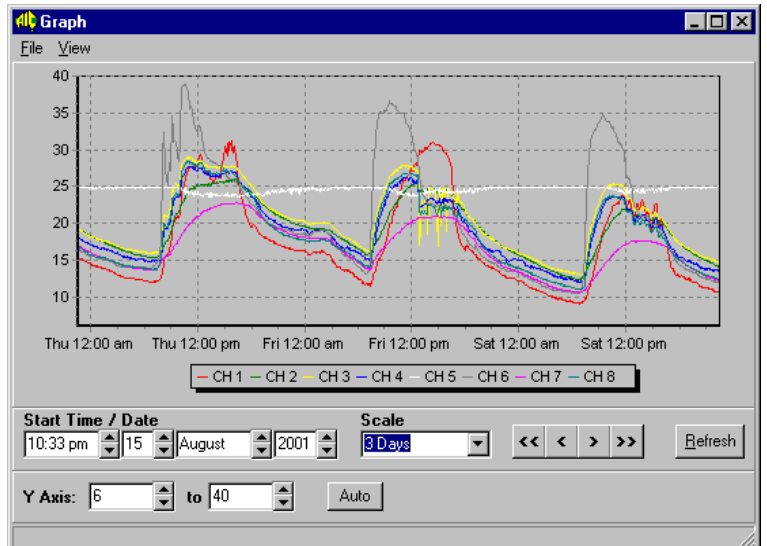


Typical internal data logger download listing

Time	Dev1_Ch0	Dev1_Ch1	Dev1_Ch2	Dev1_Ch3
9 Jul 01 16:00:00	19.8	22.8	23.9	23.9
9 Jul 01 16:10:00	18.9	22.6	23.4	22.6
9 Jul 01 16:50:00	17.8	22.6	30.7	22.9
9 Jul 01 17:00:00	17.8	22.5	23.5	22.8
9 Jul 01 17:30:00	17.5	22.3	23.3	22.6
9 Jul 01 18:00:00	17.4	22.4	24.6	23.1
9 Jul 01 18:30:00	16.5	21.8	23.2	21.5
9 Jul 01 19:00:00	16.1	21.1	21.6	20.7
9 Jul 01 19:30:00	15.7	20.7	20.5	20.3
9 Jul 01 20:00:00	14.8	19.9	19.7	19.1
9 Jul 01 20:30:00	13.7	19.1	18.5	18
9 Jul 01 21:00:00	12.9	18.4	17.5	17.1
9 Jul 01 21:30:00	12.5	17.7	16.7	16.6
9 Jul 01 22:00:00	12.1	17.2	16.2	16.1
9 Jul 01 22:30:00	11.7	16.7	15.9	15.6
9 Jul 01 23:00:00	11.4	16.3	15.7	15.3

Data Log File: i:\alan\tp488\SERIALNO.ddb

Typical internal data logger graph



Typical live data setup window

Live Data Setup

Channels: General

Channel: Silo 2 Weight

Channel Properties: Channel Name: Silo 2 Weight, Value: 8.8 tonnes

Instrument: M8IV: Sales Office (s/n: 13H01-00)

Min Value: 0.0, Max Value: 35.0, Dec Point: 1, Display Units: tonnes

Graph Settings: Display On Graph, Scale Factor: 1

Typical channel setup window

Channel Setup

Instruments: General

List Name: Sales Office, Unit Address: 1

Supports AIC Binary Protocol

Instrument Identity: Model: M8IV, Name: Sales Office, Serial Number: 13H01-00, ID No: 1

Software order code:
SOFT-DL1